

St Ann's

Area Committee Report

Unofficial June 2013 Data

Ward Priorities

Theme	Priorities	Key Actions	Outcome	Lead
Safer	Work as part of a 'Whole Community Approach' towards Domestic Violence	<ul style="list-style-type: none"> •Conduct a mapping exercise to determine which services are currently working in the area •Delivery of awareness raising training to Officers and the Community •Week of Action – Domestic Violence Theme •Implementation of new prevention structure 	A reduction of repeated reports of Domestic Violence	K. Thomas M Graley N. Bradley
	Fire Risk Reduction		Week commencing – Monday 28 th October 2013 Work with partners to make the community safer	NAT Team Kevin Tedds
Neighbourhoods	Improve banks area to flats	<ul style="list-style-type: none"> •Identify sites •Plan Development •Consult residents 	Sites agreed Plans designed with option appraisal Further work identified to consider wider area	Will Morrith
Families	Family & Community Team working to implement OFSTED framework	<ul style="list-style-type: none"> •Supporting the implementation of a tracking model of delivery in the area 	<ul style="list-style-type: none"> •Increasing the engagement of play & Youth service. 	K. Thomas
Health	Walk Leader Training	Training for local people	Local residents gain a nationally recognized qualification	P. Dodsley
Working	Approach of local Businesses	Introduction of Nottingham Jobs Fund Initiative Promote local residents for local jobs	Date agreed Wed 30 th October 2013	M. Graley NCC Economic Development

Community Engagement

Ward Walks

Area/Estate	Date/Time	Meeting Point
St Bartholomew's Rd (Donkey Hill)	Friday 14 th June 2013	Corner of St Bartholomew's Rd and St Ann's Well Road
Walker St and surrounding area	Tuesday 2 nd July 2013	Corner of Carlton Road and Walker Street
Sketchley Street and surrounding area	Wed 14 th August 2013	Corner of Sketchley Street and Blue bell Hill Road

Community Meetings

Group	Date	Venue
Greenways Community Association AGM	Sat 6 th July 2013	The Greenway Community Centre
Unity in the Community – Services Day	Tuesday 9 th July 2013	The Chase Neighborhood Centre
Domestic Violence & Abuse Awareness Training – Officers	Wed 9 th October 2013	TBC
Domestic Violence – networking meeting	Thurs 28 th November 2013	TBC

Community Engagement

Events Delivered

Event	Lead Partners	Date/Time	Venue
Mini Week of Action	NAT Team	Frid	
STOP – Community Event	STOP Tenants & Residents Association	Saturday 8 th June 2013	King Edwards park
Holding Hand Event	Unity in the Community	Saturday 13 th July 2013	The Chase
Area 6 Jobs Fair	NDO's, Area 6 Councilors and Renewal trust	Monday 1 st July 2013	Snienton Square Market

Future Events and Activities Planned

Event	Lead Partners	Date/Time	Venue
St Anns Got Talent Finals	STANRA – North	Saturday 19 th October 2013	St Judes Church
St Ann's Week of Action	NAT Team	Week commencing Monday 28 th October 2013	Various
Christmas Lights Switch on	NCC and Unity in the Community	Saturday 7 th December 2013	The Chase

Finance

Ward Councillor Budgets

Total Amount allocated this period £6,313

Budget Remaining Unallocated £71,783

Area Capital Fund

Total Amount allocated this period £162,680

Budget Remaining Unallocated £ 186,878

NCH Environmental

Budget Remaining Unallocated £ 232,821.42

Ward Summary

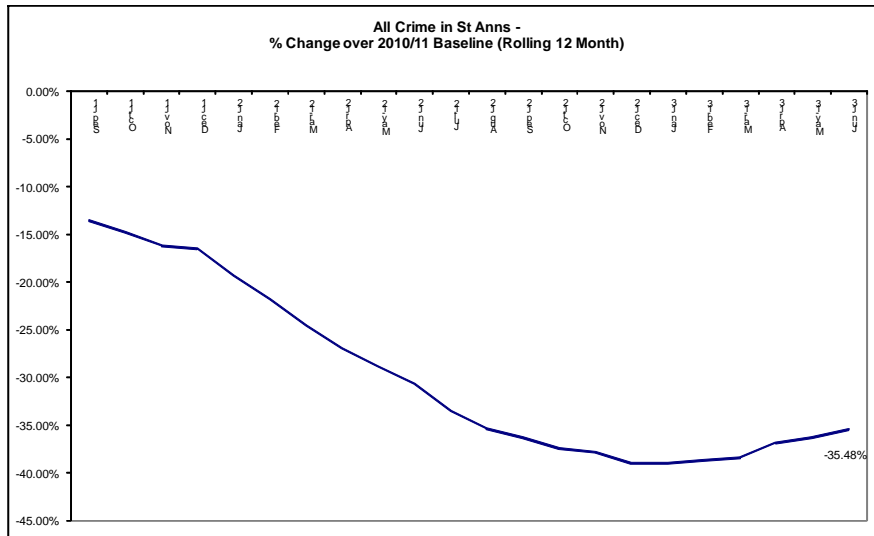
Ward Performance Snapshot

St. Ann's						
Area	Jun-13 Volume	Jun-12 Volume	Direction of Travel	YTD 13/14 Volume	YTD 12/13 Volume	Direction of Travel
Crime	106	89	↑	321	265	↑
ASB	95	126	↓	231	322	↓
DV	26	11	↑	53	39	↑
Area	May-13 Volume/ Score	May-12 Volume/ Score	Direction of Travel	YTD 13/14 Volume/ Average Score	YTD 12/13 Volume/ Average Score	Direction of Travel
Cleanliness	75	82	↓	79	80.5	↓
Graffiti	69	14	↑	146	57	↑
Fly tipping	242	113	↑	416	219	↑
Deliberate Fires	4	3	↑	11	5	↑

Ward NAT Details

WARD	NAT Meeting				
	NAT Members (TORs i.e. Nrm, Nbb, CP Team Leader etc, etc)				
	Date	Time	Venue	Name Of Officer	Email Address
St Ann's	30-May-13	9-10am	St Ann's Police Station	Sgt Nigel Bradley	nigel.bradley@nottinghamshire.pnn.police.uk
	27-Jun-13			CPTL Lee-Ann Mullen	lee-ann.mullen@nottinghamshire.pnn.police.uk
	25-Jul-13			CPTL Cathy Scales	cathy.scales@nottinghamshire.pnn.police.uk
	29-Aug-13			Michelle Graley	michelle.graley@nottinghamcity.gov.uk
	26-Sep-13			Mark Sunderland	marksunderland@nottinghamcity.gov.uk
	31-Oct-13			Jacque Thomas	jacque.thomas@nottinghamcity.gov.uk
	28-Nov-13			Will Morrill	william.morrill@nottinghamcityhomes.org.uk
	26-Dec-13				

Crime

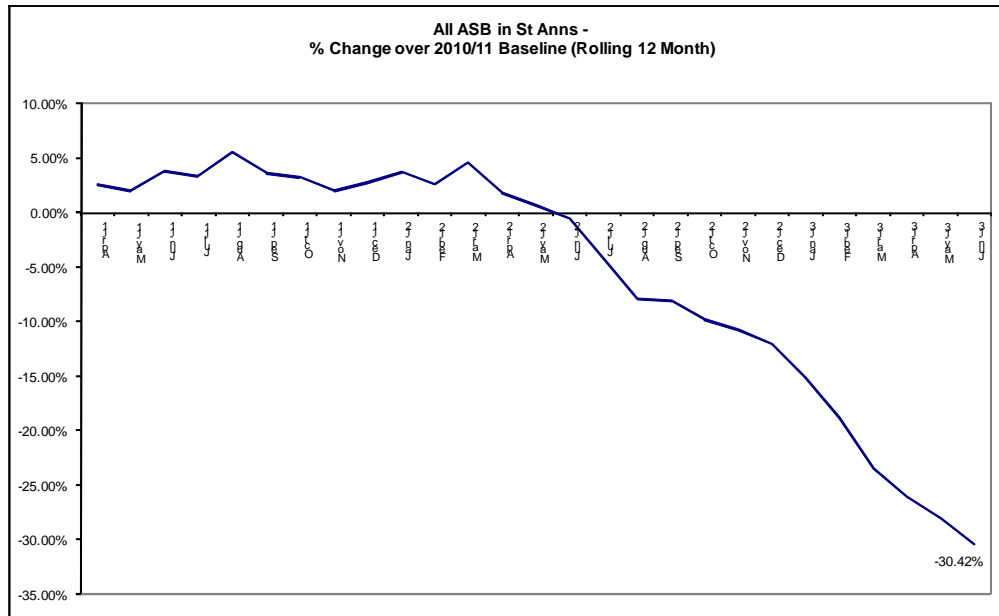


Red*	17 more crimes	19.10%
Amber		
Green		

*Refers to June 2013 compared to June 2012

- The above baseline graph compares the *rolling* 12 month total of crime in St Anns to a *fixed* 12 month 2010/11 baseline. The current 12 month total is showing a reduction of 35.48% against the baseline.
- In June 2013 there were 106 crimes which is an increase of 19.10% (17 crimes, see above RAG rating) compared to June 2012. The Division as a whole experienced an increase in all crime of *approximately* 6.4%.
- Year to date crime has increased by 21.13% (+56 crimes). The Division as a whole experienced an increase in all crime of *Approximately* 6.2% when compared to the same period last year.
- The largest volume increase this month was in Violence which is up 17 crimes (70.83%, see Table 1 of page 5).
- Crimes with a domestic flag assigned to them have increased by 15 crimes (June 2013 compared to June 2012, see Table 2 of page 5).
- The rate (per 1000 of population) of all crime in St Anns is above the average rate for the 20 wards (figures are year to date, see Table 3 of page 6).

All ASB



Red*		
Amber		
Green	31 less incidents	-24.60%

*Refers to June 2013 compared to June 2012

- The above baseline graph compares the *rolling* 12 month total of ASB in St Anns to a *fixed* 12 month 2010/11 baseline. Performance on this measure continues to improve.
- In June 2013 there were 95 ASB calls in St Anns ward, this is a reduction of 24.60% (31 calls, see above right RAG rating) compared to June 2012. The Division as a whole experienced a reduction of *approximately* 19% on this measure.
- Year to date ASB has reduced by 28.26% (-91 incidents). The Division as a whole experienced a reduction of approximately 25% on this measure.
- The rate (per 1000 of population) of ASB in St Anns is the highest rate for the 20 wards, (June 2013 figures, see Table 4 of page 7).

Crime Figures

Table 1: Crime Types by Month and Year to Date

Type	Jun-12	Jun-13	Change	% Change	Prev YTD	YTD	Change	% Change
Autocrime	4	3	-1	-25.00%	20	30	10	50.00%
Burglary	5	3	-2	-40.00%	13	18	5	38.46%
Burglary Other	1	9	8	800.00%	7	16	9	128.57%
Damage	22	19	-3	-13.64%	61	55	-6	-9.84%
Drugs	5	11	6	120.00%	18	35	17	94.44%
Fraud	4		-4	-100.00%	6	1	-5	-83.33%
Other	3		-3	-100.00%	10	9	-1	-10.00%
Personal Robbery	1	4	3	300.00%	7	22	15	214.29%
Robbery Business			0			1	1	
Sexual	2	1	-1	-50.00%	8	5	-3	-37.50%
Theft	16	9	-7	-43.75%	37	30	-7	-18.92%
Theft from Person	2	2	0	0.00%	5	5	0	0.00%
Threats		4	4		5	10	5	100.00%
Violence	24	41	17	70.83%	68	84	16	23.53%
Grand Total	89	106	17	19.10%	265	321	56	21.13%

Table 2: Crimes with a Domestic Flag Assigned to them by Month

Ward	Jun-12	Jul-12	Aug-12	Sep-12	Oct-12	Nov-12	Dec-12	Jan-13	Feb-13	Mar-13	Apr-13	May-13	Jun-13	Ward Rank (Jun-13)
ST ANNS	11	11	16	14	10	12	17	9	18	15	15	12	26	2

Crime Figures

Table 3: Crime Types by Rate (per 1000 of population) of the 20 Wards – Figures are Year to Date 2013/14

WARD	ALL CRIME	AUTOCRIME	BURGLARY	DAMAGE	PERSONAL ROBBERY	THEFT	THEFT FROM PERSON	VIOLENCE
ARBORETUM	34.10	2.33	4.49	3.95	2.42	6.19	0.63	6.19
ASPLEY	23.27	1.65	1.70	3.69	0.28	3.40	0.17	6.70
BASFORD	17.46	2.41	1.60	3.02	0.19	3.33	0.06	4.07
BERRIDGE	22.14	2.68	1.82	3.16	0.32	5.42	0.59	4.45
BESTWOOD	16.65	1.07	1.31	4.18	0.30	1.97	0.12	4.30
BILBOROUGH	20.13	2.08	1.91	3.69	0.30	2.86	0.00	4.76
BRIDGE	21.94	1.44	0.92	2.15	0.10	8.61	0.51	4.31
BULWELL	26.37	1.86	1.30	5.08	0.68	6.81	0.37	5.20
BULWELL FOREST	18.66	1.32	1.18	2.94	0.73	6.02	0.15	3.31
CLIFTON NORTH	14.59	1.63	1.16	3.49	0.39	2.41	0.08	2.79
CLIFTON SOUTH	14.12	0.79	1.51	2.37	0.22	2.94	0.07	4.09
DALES	19.87	1.40	1.21	3.95	0.18	4.68	0.43	3.77
DUNKIRK & LENTON	26.10	4.85	4.03	2.75	0.37	6.32	0.46	2.84
LEEN VALLEY	18.87	0.65	1.96	3.55	0.37	5.14	0.19	3.64
MAPPERLEY	19.69	2.02	1.77	3.16	0.19	3.98	0.00	3.34
RADFORD & PARK	21.74	3.01	2.76	1.74	0.87	6.23	0.41	2.86
SHERWOOD	22.45	1.82	1.62	1.95	0.71	9.41	0.06	3.57
ST ANNS	22.98	2.15	1.29	3.94	1.58	2.15	0.36	6.01
WOLLATON EAST & LENTON ABBEY	12.76	1.00	1.41	1.41	0.00	4.82	0.00	1.41
WOLLATON WEST	12.21	1.42	1.56	1.63	0.00	3.60	0.20	1.29
WARD AVERAGE	20.30	1.88	1.83	3.09	0.51	4.81	0.24	3.94

	Highest Rate
	Second Highest Rate
	Third Highest Rate

All ASB Figures

Table 4: All ASB by Rate (per 1000 of population) of the 20 Wards (Figures are June 2013)

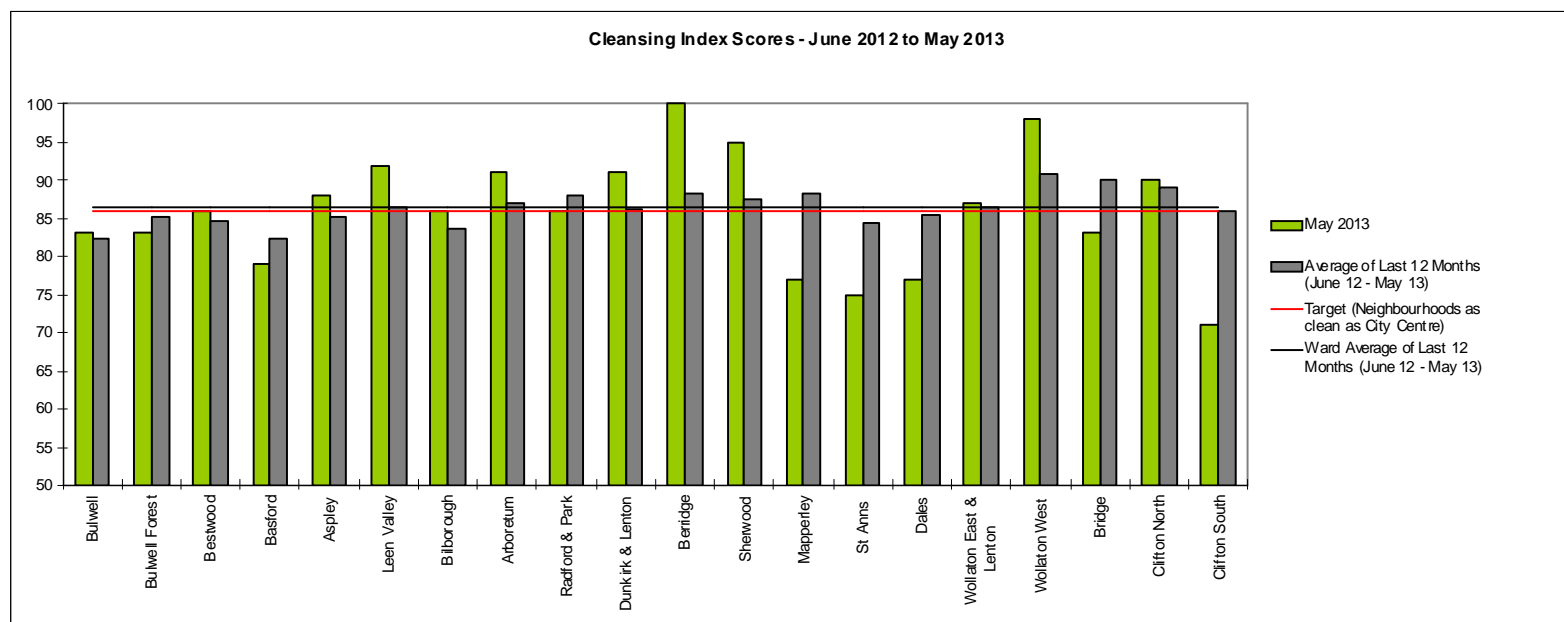
WARD	RATE (PER 1000 OF POP.) June 2013	
ARBORETUM	6.73	Second Highest Rate
ASPLEY	4.31	
BASFORD	3.46	
BERRIDGE	4.29	
BESTWOOD	3.58	
BILBOROUGH	4.11	
BRIDGE	5.74	Third Highest Rate
BULWELL	5.57	
BULWELL FOREST	3.75	
CLIFTON NORTH	3.26	
CLIFTON SOUTH	3.15	
DALES	4.31	
DUNKIRK & LENTON	3.66	
LEEN VALLEY	2.34	
MAPPERLEY	4.35	
RADFORD & PARK	4.08	
SHERWOOD	2.92	
ST ANNS	6.80	Highest Rate
WOLLATON EAST & LENTON ABBEY	1.00	
WOLLATON WEST	1.02	
WARD AVERAGE	3.92	

Table 5: All ASB by Month and Year to Date

	Jun-12	Jun-13	Change	% Change	Prev YTD	YTD	Change	% Change
All ASB Total	126	95	-31	-24.60%	322	231	-91	-28.26%

Cleanliness Index

This graph shows the position of your ward compared to other Wards



The “neighbourhood as clean as the city centre” benchmark target on cleanliness is to achieve a score of 86% in every ward. The 86% target is shown in red in the above graph.

To calculate the Cleanliness Index (CI) an agreed number of transects are surveyed across an area covering a range of land types. Each site surveyed is awarded a cleanliness grade based on a 7 point scale from A to D where Grade A: – no litter, and Grade D: - heavily littered. The maximum possible score of 100 is achieved when all sites achieve Grade A.

The Code of Practice for Litter and Refuse (COPLAR) requires councils to strive to reach an ‘acceptable’ standard of cleanliness (grade B or better) across the Council area. Grade A is the ultimate goal and is how a site should be immediately after sweeping but is almost impossible to maintain for any length of time. For example, a grade A site is completely free of litter – one cigarette butt takes it down to B+.

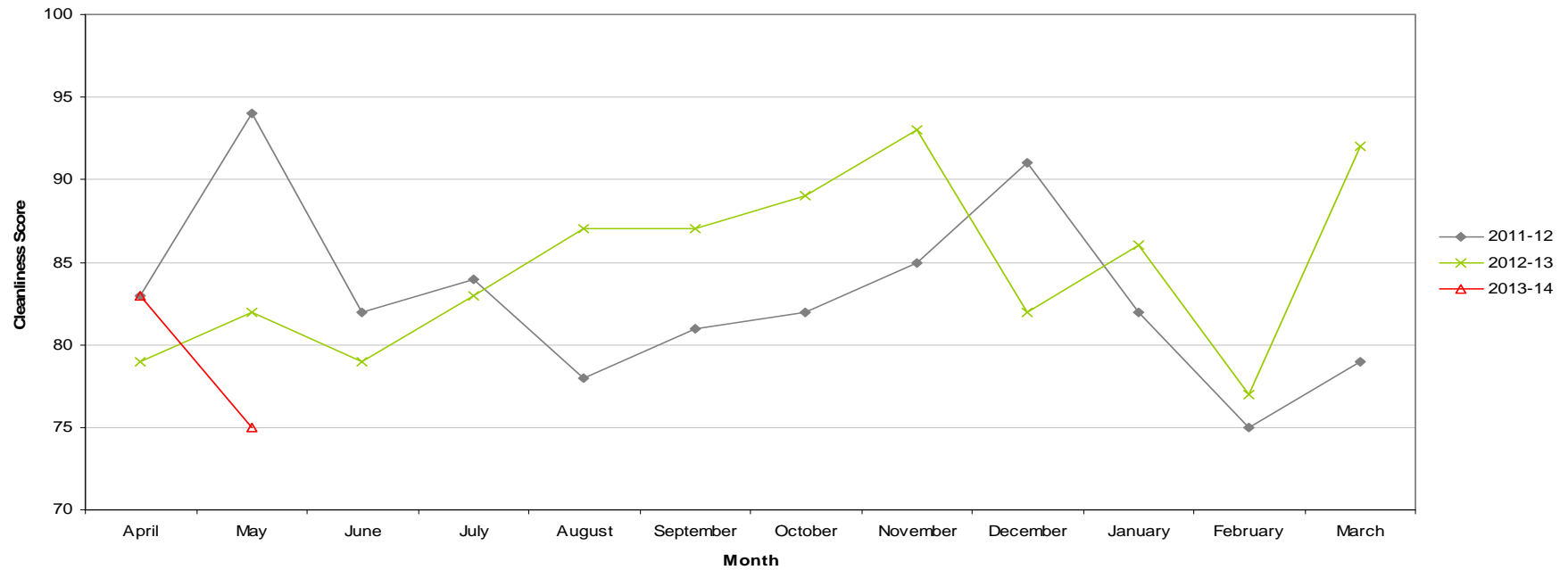
To achieve the manifesto commitment of Neighbourhoods as clean as the City Centre a target of 86 is required as that was the CI for the City Centre in May 2011. To give some context if all areas surveyed achieved a grade ‘B’ standard, this would equate to a cleanliness index of 67.

Cleanliness Index

Cleanliness Index Score	75
Performance compared to previous year	↘
Performance compared to neighbourhoods target of 86	↘

- All data refers to a comparison with the previous year's month
- It is proposed that performance over time graphs be used for each indicator
- Historic data for comparison is not available for dog fouling

Cleanliness Index - St Ann's

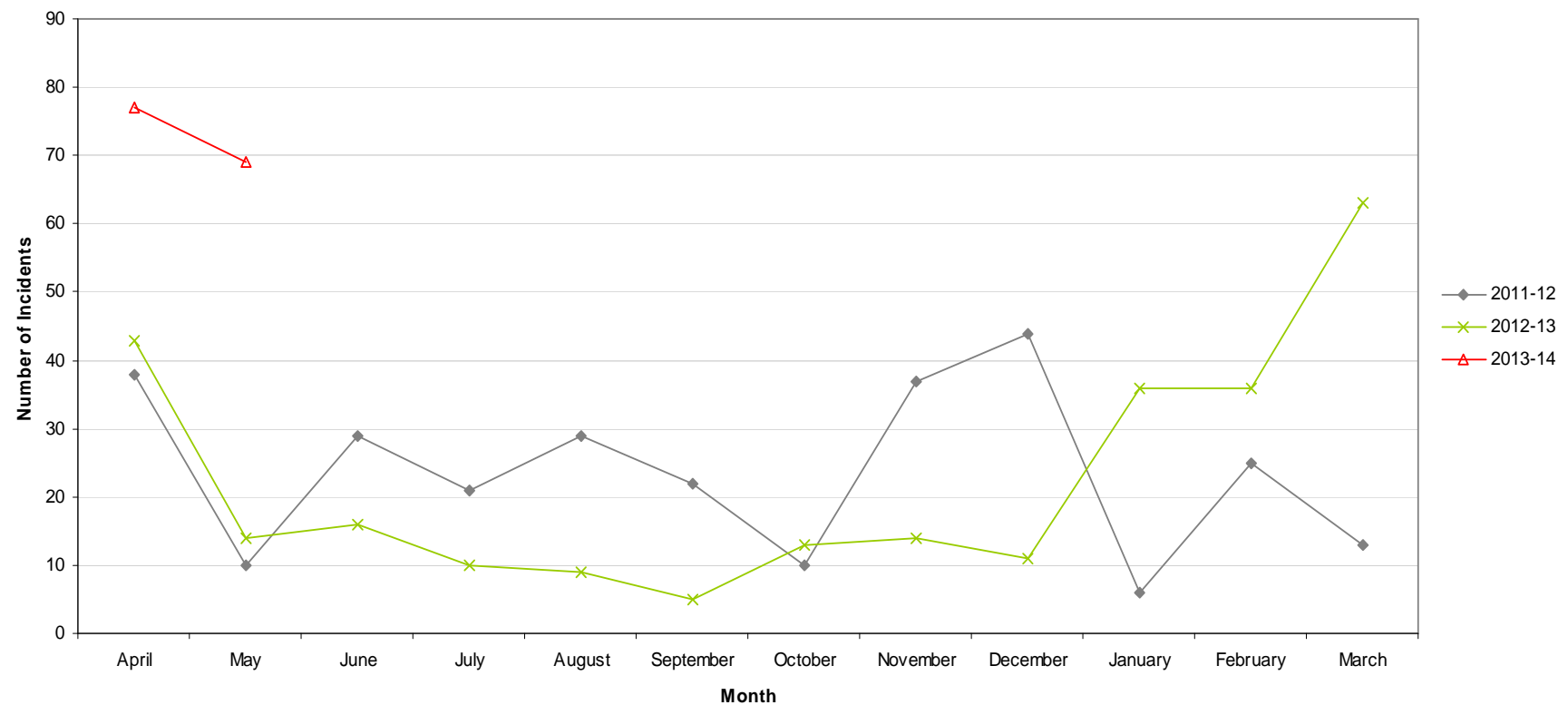


Graffiti Reports

RED	69 incidents	Increase of 55
AMBER		
GREEN		

- All data refers to a comparison with the previous year's month
- It is proposed that performance over time graphs be used for each indicator
- Historic data for comparison is not available for dog fouling

Incidents of Graffiti - St Ann's

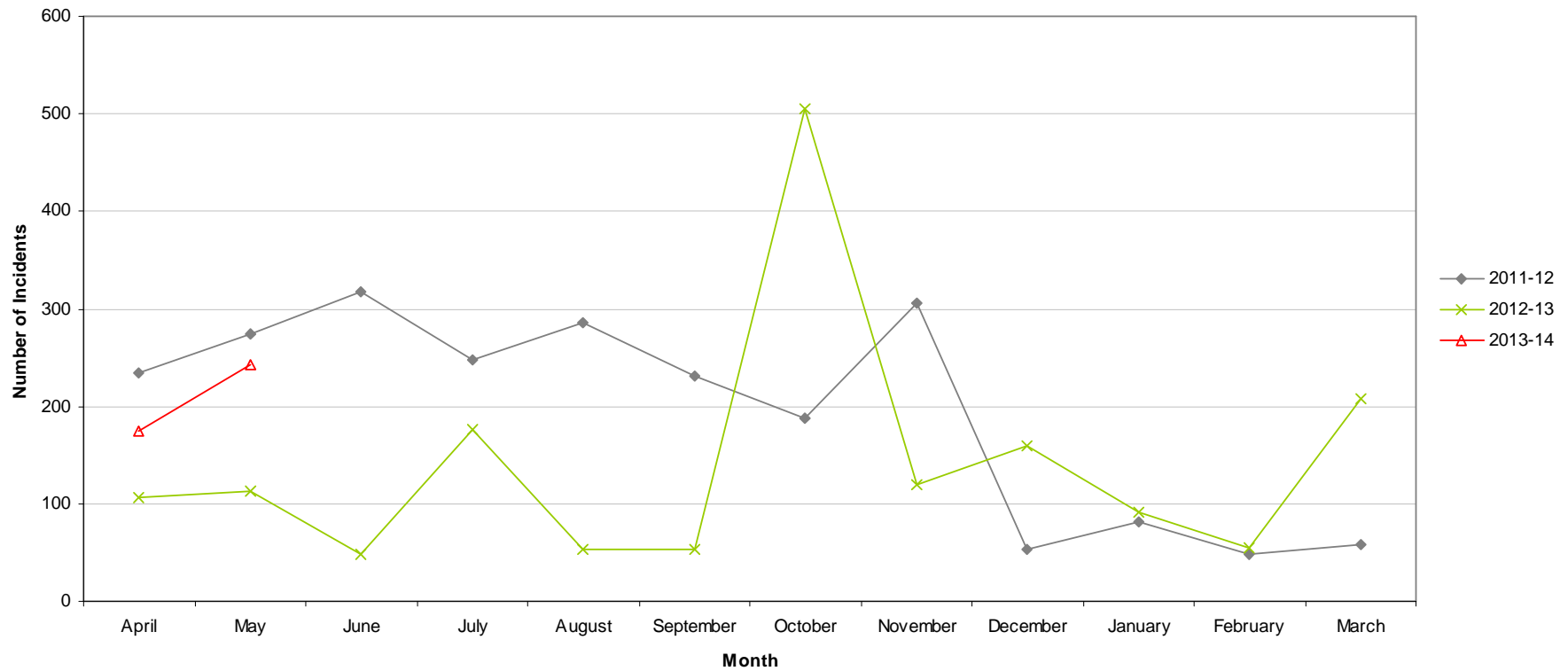


Fly Tipping

RED	242 incidents	Increase of 129
AMBER		
GREEN		

- All data refers to a comparison with the previous year's month
- It is proposed that performance over time graphs be used for each indicator
- Historic data for comparison is not available for dog fouling

Incidents of Fly Tipping - St Ann's



Unemployment Rate

Area	May-13			Change in last month		Change in last year	
	Number	Rate	City Rank	Number	%	Number	%
Arboretum	838	7.1	7	-21	-2.4	-13	-1.5
Aspley	1,204	10.6	1	-18	-1.5	-18	-1.5
Basford	722	6.5	9	-18	-2.4	-24	-3.2
Berridge	1,041	7.1	7	-40	-3.7	-52	-4.8
Bestwood	1,010	8.9	4	-22	-2.1	-26	-2.5
Bilborough	774	7.4	6	-35	-4.3	-30	-3.7
Bridge	670	6.4	10	2	0.3	-100	-13
Bulwell	1,076	9.9	2	-46	-4.1	16	1.5
Bulwell Forest	443	4.9	14	-3	-0.7	-23	-4.9
Clifton North	414	4.7	16	-13	-3	5	1.2
Clifton South	498	5.7	12	-17	-3.3	-28	-5.3
Dales	878	7.5	5	-40	-4.4	-21	-2.3
Dunkirk and Lenton	229	2.1	19	-7	-3	-42	-15.5
Leen Valley	333	4.8	15	-10	-2.9	-16	-4.6
Mapperley	692	6.2	11	-12	-1.7	-73	-9.5
Radford and Park	760	4	17	-19	-2.4	-33	-4.2
Sherwood	546	5.1	13	-38	-6.5	-67	-10.9
St Ann's	1,259	9.1	3	-22	-1.7	-5	-0.4
Wollaton East and Lenton Abbey	150	1.5	20	-3	-2	4	2.7
Wollaton West	230	2.5	18	-5	-2.1	-14	-5.7

This is an edited version of a report produced by: Geoff Oxendale, Information and Research Officer, Nottingham City Council. Claimant count of Job Seekers Allowance (JSA) is used as a proxy measure for unemployment.

Wards are ranked from 1 (highest Rate, per 1000 of population, of JSA claimants) to 20 (lowest Rate).

Housing

St Anns Ward - Housing



Anti-social behaviour - St Anns (St Anns Ward)

Indicator	Current Target	2010/11	2011/12	2012/13		
		Value	Value	Value	Status	Trend
% of ASB cases resolved - St Anns	97.6%	100%	97.41%	99.03%		
% of ASB cases resolved by first intervention - St Anns	75%	-	-	81.97%		n/a

Empty properties - St Anns Ward



Indicator	Current Target	2010/11	2011/12	2012/13		
		Value	Value	Value	Status	Trend
Average void re-let time for St Anns Ward (calendar days)	26	31.93	31.28	30.3		
Number of lettable voids St Anns Ward	-	24	25	30		
Number of empty properties awaiting decommission in St Anns Ward	-	43	6	11		

Estate star ratings (from Tenant Service Inspectors)







Indicator	2010/11		2011/12		2012/13		
	Value	Status	Value	Status	Value	Status	Trend
Estate star rating - Marmion Road	3 Star		2 Star		3 Star		
Estate star rating - St Anns	2 Star		3 Star		3 Star		

Housing

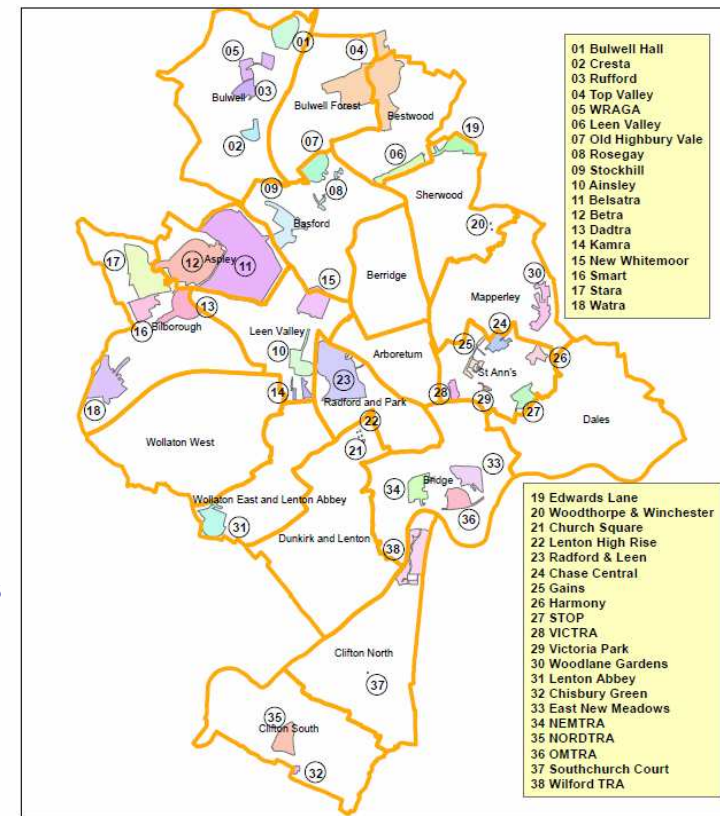
Rent Collection - St Anns

Indicator	Current Target	2010/11	2011/12	2012/13		
		Value	Value	Value	Status	Trend
Rent charged that has been collected - St Anns	100.2%	100.3%	101.4%	100%		

Key:

-  Performance on or exceeding target
-  Performance below target
-  Data only performance indicator
-  Performance has improved compared to two years ago
-  Performance has deteriorated compared to two years ago
-  Performance unchanged

Map of Tenants and Residents Associations by Ward



Data prepared by Nottingham City Homes Performance Team

For more information please contact Tricia Quinn, Performance Review Manager on 0115 9157365 or Marcus Parton, Performance Review Officer 0115 915715

Housing

Performance indicator definitions

Performance indicator	Definition
% of ASB cases resolved	This performance indicator monitors the proportion of ASB cases that Nottingham City Homes has successfully resolved. Data for this indicator is not available by ward and is reported by Housing Office.
% of ASB cases resolved by first intervention	This performance indicator monitors how many ASB cases Nottingham City Homes resolved on the first intervention e.g. written warning. Data for this indicator is not available by ward and is reported by Housing Office.
Average void re-let time (calendar days)	This performance indicator monitors how many empty properties Nottingham City Homes has re-let and the length of time it has taken. The void period is the number of calendar days including the day after the old tenancy ends right through to and including the day before the new tenancy starts.
Number of lettable voids	This performance indicator monitors the number of empty properties which are available for re-letting. Lettable empty properties are those which will receive repair work and then be let to a new tenant.
Number of empty properties awaiting decommission	This performance indicator monitors the number of empty properties which will not be re-let and includes those being decommissioned and / or demolished.
Estate star ratings	Nottingham City Homes Tenant Inspectors monitor the condition of estates and rates them according to a zero, one, two and three star standard. The estates are monitored every three months with a selection of streets (determined by tenants) covering all 42 estates.
Rent charged that has been collected	This performance indicator measures the amount of rent collected (including tenant arrears) as a percentage of rent due for the current year. Data for this indicator is not available by ward and is reported by Housing Office.

Community Protection

Data has been received from Community Protection and where postcodes have been listed these have been geo-coded and mapped to determine the Ward. All addresses relate to the address of the Perpetrator.

FPNs are not currently available at ward level.

In June 2013 there were 8 orders issued:

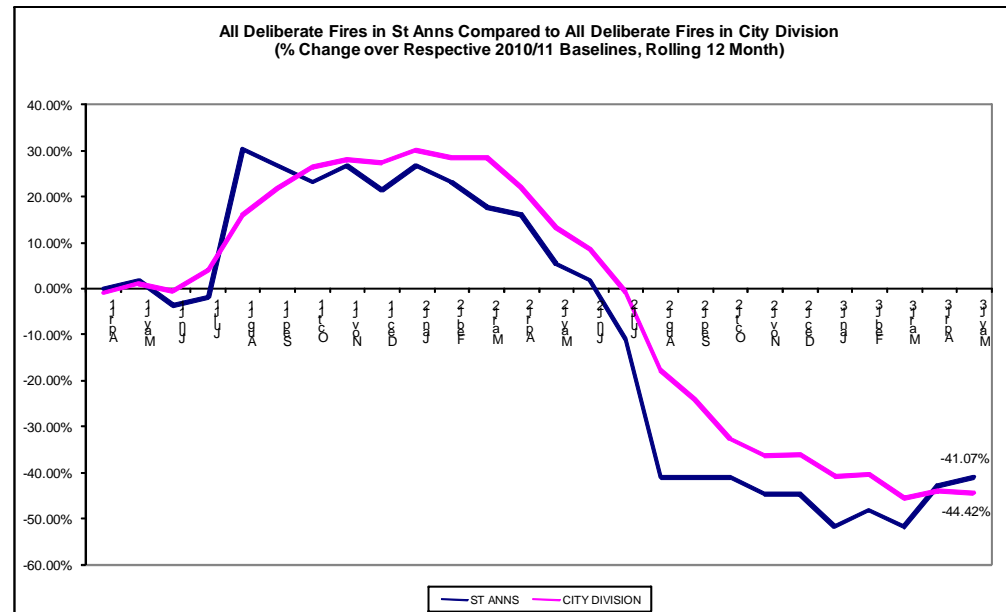
- **Injunction for Harassment**
- **Injunction for Environmental Issues**
- **Statutory Notice for Environmental Issues**
- **Outright Possession Order/Eviction for Drugs**
- **Caution for Environmental Issues**
- **Undertaking for Harassment**
- **2 x Injunctions for Drugs**

For enquiries regarding Community Protection court outcomes please contact the Operational Manager for the locality.

Fire

Table: Volume of Deliberate Primary and Secondary Fires by Ward

Ward	May-12	May-13	Change	% Change	Previous YTD	YTD	Change	% Change
Arboretum	1	1	0	0.00%	1	4	3	300.00%
Aspley	6	5	-1	-16.67%	7	11	4	57.14%
Basford	3	3	0	0.00%	11	5	-6	-54.55%
Berridge	6	4	-2	-33.33%	8	8	0	0.00%
Bestwood	3	6	3	100.00%	9	14	5	55.56%
Bilborough	9	1	-8	-88.89%	19	3	-16	-84.21%
Bridge	1	3	2	200.00%	2	5	3	150.00%
Bulwell	6	10	4	66.67%	15	14	-1	-6.67%
Bulwell Forest	3	1	-2	-66.67%	6	4	-2	-33.33%
Clifton North	1	1	0	0.00%	2	4	2	100.00%
Clifton South	3	4	1	33.33%	3	8	5	166.67%
Dales	1	1	0	0.00%	1	5	4	400.00%
Dunkirk and Lenton	0	0	0		0	1	1	
Leen Valley	3	1	-2	-66.67%	7	7	0	0.00%
Mapperley	3	1	-2	-66.67%	3	5	2	66.67%
Radford and Park	1	1	0	0.00%	2	1	-1	-50.00%
Sherwood	1	0	-1	-100.00%	1	0	-1	-100.00%
St. Ann's	3	4	1	33.33%	5	11	6	120.00%
Wollaton East and Lenton Abbey	0	1	1		1	2	1	100.00%
Wollaton West	0	0	0		0	2	2	
Total	54	48	-6	-11.11%	103	114	11	10.68%



•The above table shows volume of deliberate (primary and secondary) fires in the 20 wards. In May 2013 there were 4 fires in St Anns, compared to 3 the previous year. This shows an increase of 33%. The incidents included:

1 dwelling fire and 1 non residential at a college/university

2 x fence fires

•The graph on the right shows a *rolling* 12 month total of deliberate fires in St Anns against the *fixed* 2010/11 baseline. The performance of the City Division against *its* baseline has also been shown for comparison purposes.

Note: Where ward boundaries overlap with the City Centre fires that occurred in the City Centre have been **included** in the ward figures.

Methodology

Data has not been audited or verified and therefore must only be used as a reflection of crime.

Crime data and ASB calls have been extracted from the Police systems and mapped to ascertain which Ward they occurred in.

Where a ward boundary overlaps with the City Centre, crime data and ASB calls relating to the City Centre have been removed.

Where possible the most recent data is used, although for some areas this may be a month further in arrears.

Discussions continue with other agencies regarding what further data can be included.